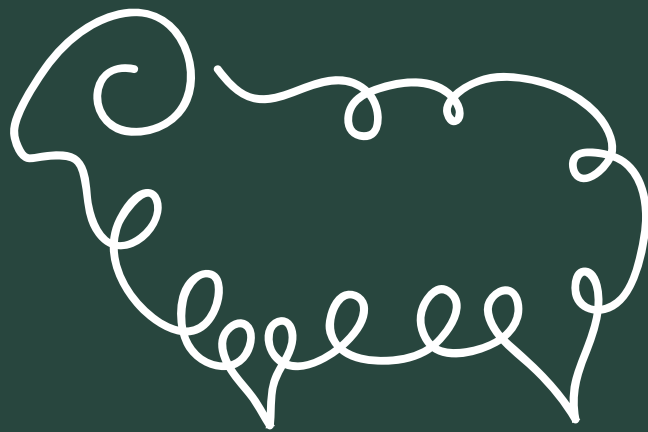


*gatherings*



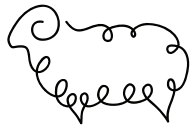
---

HISTORIC HOTELS  
*of* AMERICA

---

National Trust *for* Historic Preservation

---



## *before we start*

Bellwether House is an intimate historic hotel on a quiet, semi-residential street in the heart of the Historic District. As such, there are a few things we want you to know before you choose to book. Please make sure to read and note all of these details and stipulations before committing to our beautiful hotel for your gathering.

### 6 MONTH NOTICE

Due to the nature of our intimate space, we require your event request to be 6 months in advance.

### 50 GUEST MAXIMUM

This is part of our Good Neighbor Agreement so we can honor our neighbors and keep the noise and traffic to a minimum. No exceptions.

### EVENT COORDINATORS

An event/wedding coordinator is required for any buyout with a special event permit. So, if you are doing anything besides using the hotel as a gathering space and partaking in our standard daily offerings, a coordinator will be necessary to ensure that both your event/wedding goes perfectly and that our staff can be attentive to the guests of the hotel. We will work in tandem with the planner so you don't have to, and we are happy to connect you to a preferred planner if you need.

### 50% DEPOSITS & PAYMENTS

A deposit of 50% of your buyout total including all food, alcohol, and any other anticipated extras is due at the time of signing your contract to guarantee your dates. A signed contract will not hold your dates until the 50% deposit is paid.

### CANCELLATIONS & CHANGES

The deposit is fully refundable until 60 days from your event date. If the hotel has paid for any preparatory fees or services which can not be refunded, or used hotel time and staffing for any preparations at that point, then those hours and fees will be subtracted from the deposit before returning.

If you need to cancel after 60 days, the deposit is non-refundable, but can be moved to a new date to help accommodate your situation. If you are canceling for an extenuating circumstance, that will be handled on a case by case basis.



## hotel buyout

Bellwether House is a luxury hotel living inside a historic Bed & Breakfast. The property is a beautiful pair of adjoining Italianate townhouses boasting the longest contiguous front porch in Savannah and a beautiful large courtyard for hosting outdoor events. We have specialists in every area from wellness and excursions to food and floral design. We can take care of all the details for any event, so that you can simply sit back and let your vision come to life for any special day.

### STANDARD BUYOUT

\$10,000 per night

Does not include taxes & fees.

This is for any use where both the number of guests do not exceed room capacity (all guests must stay at the hotel) and there are no extraneous needs of the hotel's amenities and staff outside normal use. This category is for things like wellness, corporate, and group retreats.

### EVENT BUYOUT

\$14,000 per night

Does not include taxes & fees.

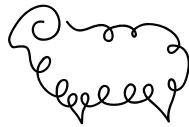
This is for any use with up to but not more than 50 guests where special use of our facilities is required. This category is for things like weddings, rehearsal dinners, and other gatherings where the need for loud music, dancing, serving alcohol to non-hotel guests, and use of the courtyard after 9PM are desired or needed. Don't worry, we'll handle all the paperwork.

### INCLUDED IN ANY BUYOUT

All 16 Luxury Rooms for Guest Use for the Night  
Full Service Breakfast Every Morning (8AM-12PM Standard Menu)  
Morning Yoga Upon Request (At Cost)  
Afternoon High Tea (3PM-5PM)  
Evening Champagne Toast (6PM)  
Spa Access (Treatments at Menu Price)  
Evening Curated Bar Access (Drinks at Menu Price)  
Full Set of Outdoor Chairs, Dining Chairs, & Tables for 50 Guests  
All Table Linens, Plates, Glasses, Cutlery, and Serving Dishes  
Valet Service for the Evening

### ROOM BREAKDOWN

5 Queen Rooms  
9 King Rooms (One is handicap accessible)  
2 Exceptional Rooms



## food and beverage

We curate interesting menus based around local and regenerative farming practices that use the best ingredients to make truly special food. Our bar focuses on unique bio-diverse wines and spirits to make the classics feel new again. With our vast network of farmers and suppliers we can make you anything from our Indian and Southern Comfort house menu or design a menu from scratch for your special gathering.

### FAMILY STYLE

Large portions delivered to each table for sharing.

Standard • \$55 per Head

Specialty • \$75 per Head

Select wines available by the glass at menu price.

### COURSED DINING

Each guest receives a perfectly timed plated & coursed meal.

3 Courses • \$75 per Head / \$15 per Glass Optional Wine Pairings

### COFFEE & BARISTA

Drip Coffee • \$4 per Head (Includes Sweeteners & Milk Options)

Barista Service • \$8 per Head (Espresso, Lattes, & Specialty Syrups)

Barista Service includes drip coffee. Alternative milks available.

### CAKE & PASTRY DESIGN

We have an in-house pastry chef who is second to none.

6" & 8" Tier • \$600 - Serves 32 Guests

6", 8" & 10" Tier • \$950 - Serves 50 Guests (Top Can Be Saved)

Pastry and Single Portion Desserts • \$12 per Head

### BAR & ALCOHOL

Our bar is specifically curated to be complete and unique.

The bar is available at standard menu rates if desired.

Beer & Wine Open Bar • \$40 per Head

Beer, Wine, & Liquor Open Bar • \$65 per Head

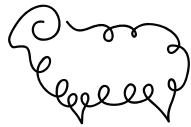
Choose 2-3 Beers, 2-3 Wines, and 2-3 Specialty Cocktails (As Applicable)

### VENDORS

Proof of insurance/licensing is required.

Vendors must provide staff for food service/bartending.

If the use of our kitchen is needed, the space must be viewed by vendor(s) prior to use.



## *outside vendor requirements*

**All outside vendors needs to provide a certificate of insurance with the following coverages and minimum limits:**

- General Liability with minimum limits of \$1MM per occurrence and a \$2MM aggregate. Please list Bellwether House Investors, LLC as an Additional Insured.
- Workers Compensation coverage.
- If serving alcohol, provide Liquor Liability coverage with minimum limits of \$1MM per occurrence and a \$2MM aggregate. Please list Bellwether House Investors, LLC as an Additional Insured as well. Bartender(s) must be provided.
- If the use of the kitchen and/or bar is needed; an appointment must be made to view the space prior to the event. Serving staff must be provided for set up, break down, during, and after the event.
- All kitchen, bar, and dining spaces must be left in the same condition they were found. Clean, organized and in working order. All vendors will be subject to additional charges if the space is not returned clean, organized and in working order.

### OUR KITCHEN

\$500 for 6 Hours

4 Gas Burner Stove

Single Fryer With Double Baskets (Additional \$150 Charge)

1 Convection Oven

Tall-Boy Freezer

Standard Size Walk-In Cooler

3 Compartment Sink

Small Front Load Dishwasher

### OUR BAR

\$200 for 6 Hours

Small Ice Machine

Ice Well With Double Speed Rail

6 Styles of Glassware: Coupe, Flute, Wine, Pint, Collins, Rocks

All Necessary Bar Tools: 2 Shakers, Mixing Glasses, Jiggers, Strainers, Bar Spoons, Muddlers, Wine Keys, Juice and Syrup Bottles With Pour Spouts

Small Beer and Wine Fridge



## *health and wellness*

### OUR SIGNATURE YOGA

\$135 per Session

\$25 Each Additional Guest

A one-hour Yoga session of our BW Signature-Style Flow with seamless movement and guided breath. This class can be designed for any level; however, previous experience with yoga is recommended.

### CURATED YOGA

\$165 per Session

\$25 Each Additional Guest

A tailored one-hour session to meet the needs of your body and learn a new technique, perfect your alignment, and/or help heal an injury. Includes a consultation. Perfect for beginners or those who are wanting a deeper explanation of poses we practice.

### SCULPT YOGA

\$105 • 45 min | \$135 • 60 min

\$25 Each Additional Guest

Our unique blend of sculpt yoga using handheld weights + barre-style isometrics. Great strength building, sweat inducing practice with intentional movement and conscious breath.

### GUIDED MEDITATION

\$65 a La Carte | \$25 as Add-On

\$25 Each Additional Guest

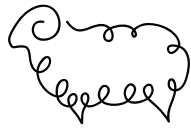
Enjoy a Dharma talk + explanation of a meditation technique followed by breathing exercises. You will be guided through the technique then will be given quiet time to reflect on your own. Plenty of meditation cushions + props will be offered to make you as comfortable as possible.

### MINI-RETREAT

\$195 per Session

\$45 Each Additional Guest

Get a sneak peek into what it's like to experience a Bellwether Wellness Retreat. You'll be greeted by local tea as you ground with breath-work, followed by positioning yourself in a nest of our luxury props as you are guided through a series of restorative yoga poses, sound healing, guided meditation, aromatherapy, and finish with a deep savasana rest. Truly special and unique.



## *health and wellness (cont.)*

### SPECIAL GROUP WELLNESS

Choose any of our wellness classes for a larger group.

Special Group 5 People • \$285

Special Group 6-10 People • \$375

Special Group 11-15 People • \$435

Special Group 16-20 People • \$560

Special Group 20-32 People • \$625

### YOGA EQUIPMENT LIST

Jade Yoga Mats

Lululemon Yoga Towels

Adjustable Yoga Straps

Ergonomic Cork Yoga Blocks

Soft Yoga Blankets

Brentwood Home Lumbar Pillow

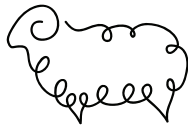
Brentwood Home Head Pillow

Brentwood Home Meditation Pillow

### BODYWORK & HOT BATHS

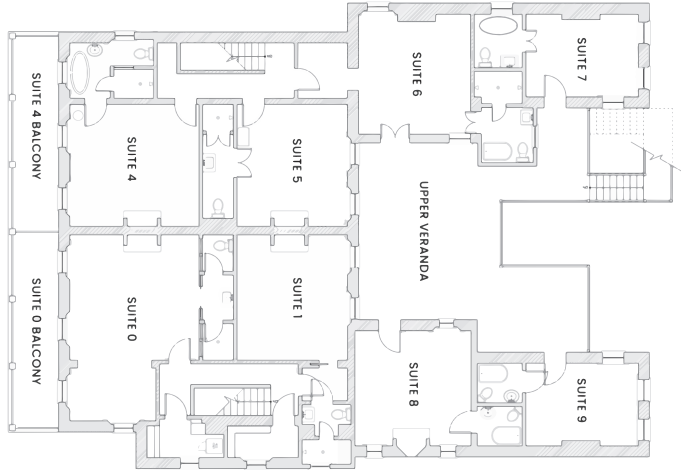
\$60-\$250 per Session

A special collection of massages, soaks, and body techniques to restore, heal, and brighten your body and mind. Our Hot Baths use ancient mineral salts from a preserved million year old ocean under ground for a pure experience. A list of current treatments is available on our website. No group rates available.

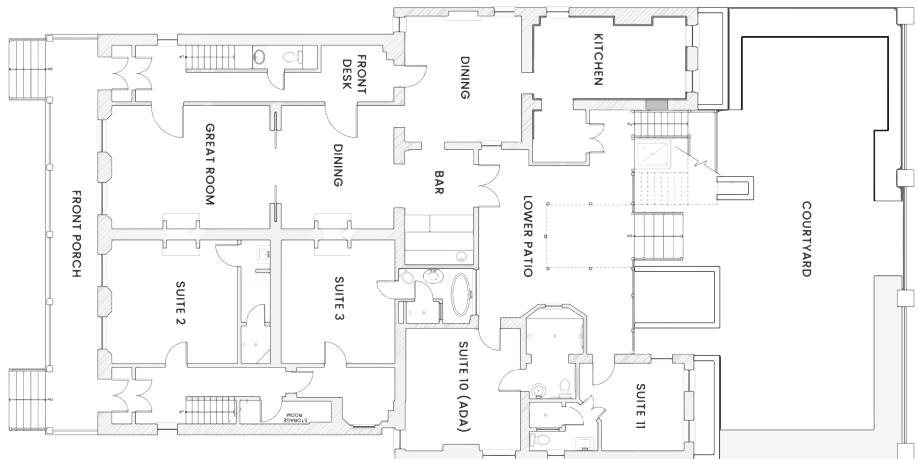


# *floorplan*

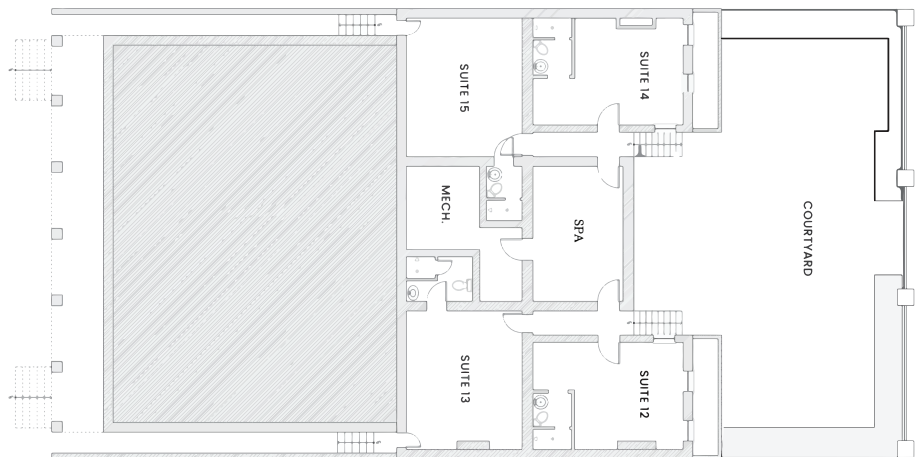
UPPER LEVEL



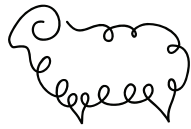
MAIN LEVEL



GARDEN LEVEL







location map

